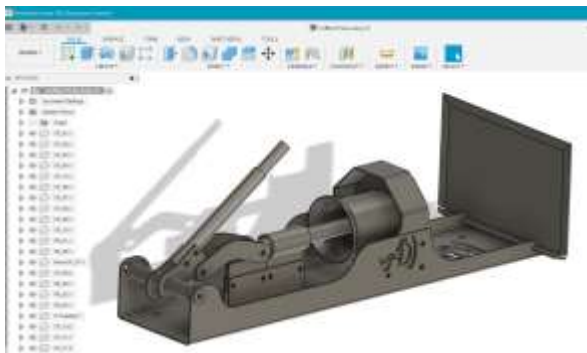
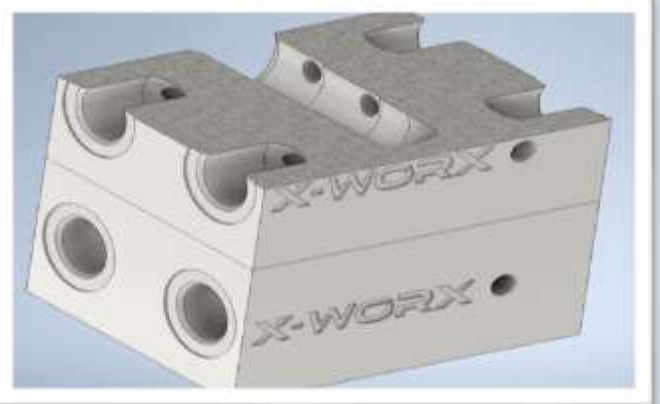




**Engineering and company strategically situated in George Industria on the Garden Route.
We have a proven global Clientele in Mining, Construction and Agriculture.**

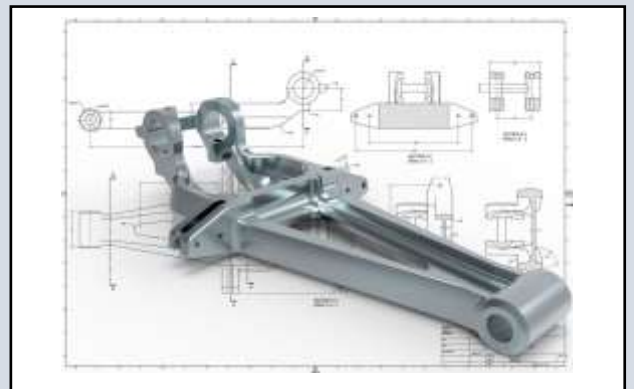
We offer the following services:

- In-house CAD/CAM Services
- Concept—Design—Cost Modelling—BOM
- Sheet Metal and Tube Laser cutting
- CNC Milling, Turning and Broaching
- Sheet Metal Bending
- Fabrication and Assembly



From Concept to Prototype, R&D to Costing, Manufacturing to Shipping, we give you competitive pricing, excellent lead times, commitment to service, and our proven track record in the manufacture of well-known brands.

Our in-house design team uses the latest in CAD techniques strengthened by our suite of Autodesk Software for ease of development and collaboration. Our iterative approach to problem solving keeps cost and development times to a minimum, providing you with a robust and flexible development cycle to help you take your product to market.



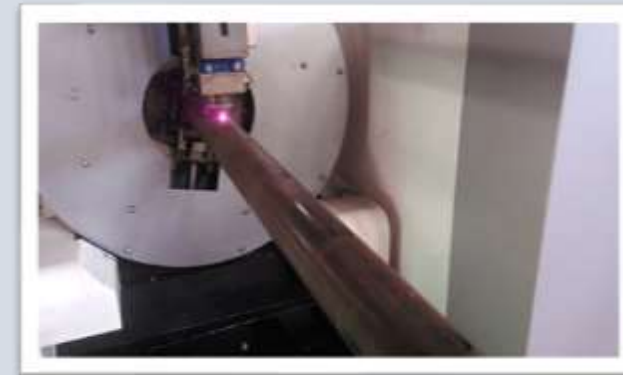
Telephone: +27 83 222 1641
Email: rian@duminydesigns.co.za

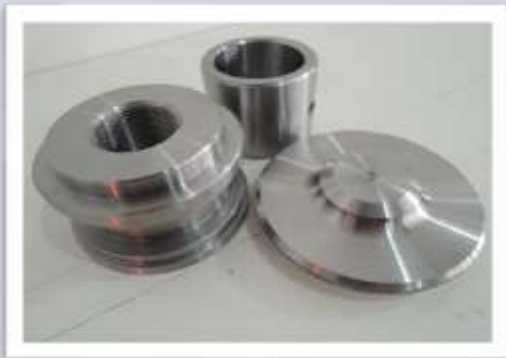
IE-TEC South Africa
26 Brick Road
George Industria
6536

ENGINEERING

- ✓ Component CAD design and manufacturing.
- ✓ General Engineering (shafts, bushes, housings, industrial component manufacturing).
- ✓ CNC precision milling and turning (HAAS milling and LEADWELL turning CNC machines).
- ✓ Hydraulic cylinder design and manufacturing to customer specifications.
- ✓ High precision work, carried out using latest procedures and advancements in the industry.

We welcome you to reach out to us, visit our factory and let us talk about your requirements.

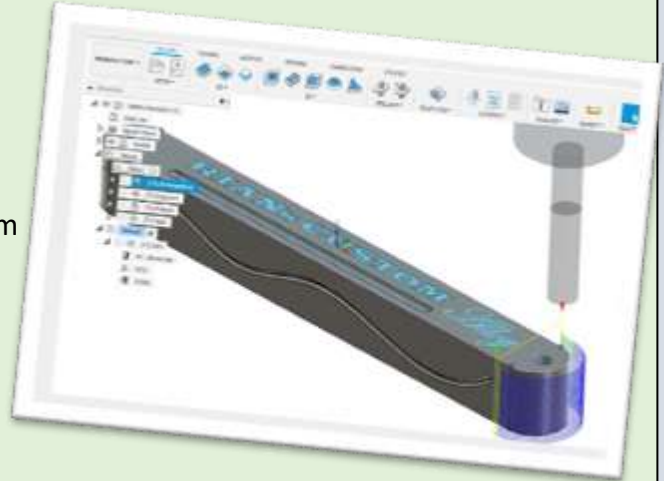




Machining specifications:

➤ **CNC TURNING:** Leadwell T6

- Tailstock, 12 station ATC
- A maximum swing of 450 mm
- Swing over cross slide of 290 mm
- Maximum turning length of 420 mm
- A bar capacity of 51 mm
- Through spindle measuring 62 mm
- Chuck diameter of 200 mm



➤ **CNC MILLING:** Haas TM-1P

- X Axis 762 mm
- Y Axis 305 mm
- Z Axis 406 mm
- Spindle Nose to Table (~ max) 508 mm
- Spindle Nose to Table (~ min) 102 mm
- Max Speed 6000 rpm



➤ **LASER CUTTING:** ACCTEK AKJ1530F2

- Cutting area: 1500*3000mm
- Mild Steel Up to 16mm
- Stainless up to 10-12mm
- Tube laser up to 200 - 220mm diameter (depends on profile)

